



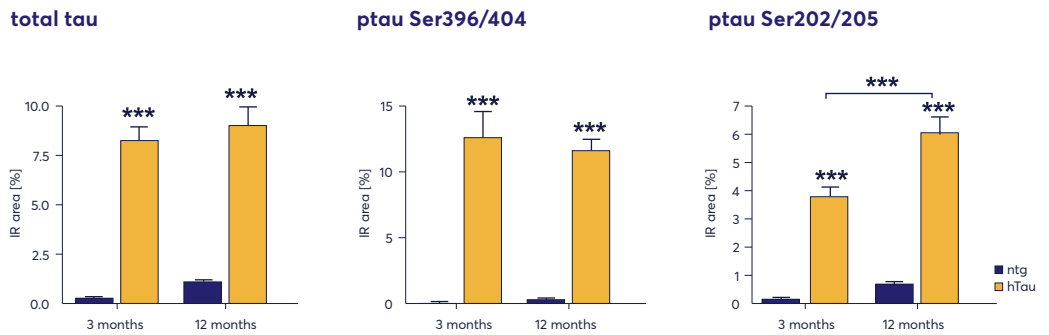
## hTau Transgenic Mouse Model

hTau mice express human tau derived from a human PAC, H1 haplotype, known as 8c mice, while murine tau is knocked out by a targeted disruption of exon 1.

- High total tau expression
- Increased ptau Thr231 levels
- Increased ptau Thr181 levels
- Increased ptau Ser396/404 levels
- Increased ptau Ser202/Thr205 levels

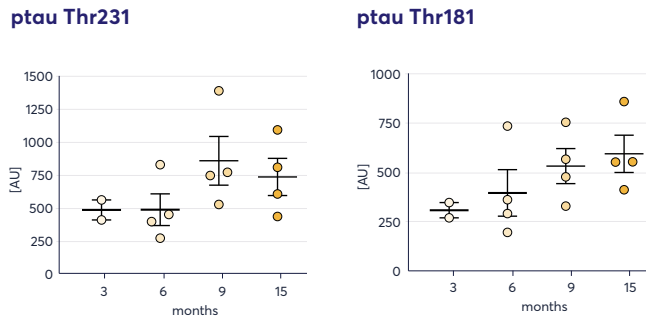
**Figure 1:** Quantitative analysis of total tau, ptau Ser396/404 and ptau Ser202/Thr205 levels in the cortex of 3 and 12 month old hTau mice compared to non-transgenic (ntg) littermates by HT7, AD2, and EPR2402 antibody, respectively. Immunoreactive area (IR) in percent; n = 8 per group. Mean + SEM; Two-way ANOVA with Bonferroni's *post hoc* test; \*\*\*p<0.001.

Figure 1



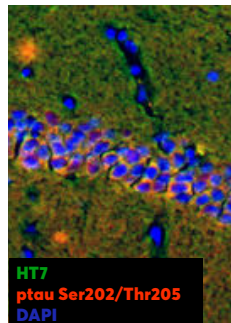
**Figure 2:** Soluble ptau levels in the brain of hTau mice. Soluble tissue fractions of 3, 6, 9, and 15 month old animals were analyzed for pThr231 and pThr181 levels by MSD-ISA. One-way ANOVA with Newman's Keul's multiple comparison test. Mean ± SEM; n = 2 - 4.

Figure 2



**Figure 3:** Representative image of ptau Ser202/Thr205 and total tau (HT7) labeling in the cortex of hTau mice.

Figure 3



Andorfer C, Kress Y, Espinoza M, de Silva R, Tucker KL, Barde YA, Duff K, Davies P. Hyperphosphorylation and aggregation of tau in mice expressing normal human tau isoforms. *J Neurochem.* 2003 Aug;86(3):582-90.

