



Tau Seeding Mouse Model

P301L Tau AAV injections in the entorhinal cortex (ERC) of APP_{SL} mice cause spreading of Tau in the hippocampus.

- High total tau expression
- Increased ptau Thr212/Ser214, Thr231, Ser262, Ser356, Ser396 levels
- Increased Aβ levels
- Pre-neurofibrillary tangles

Figure 1

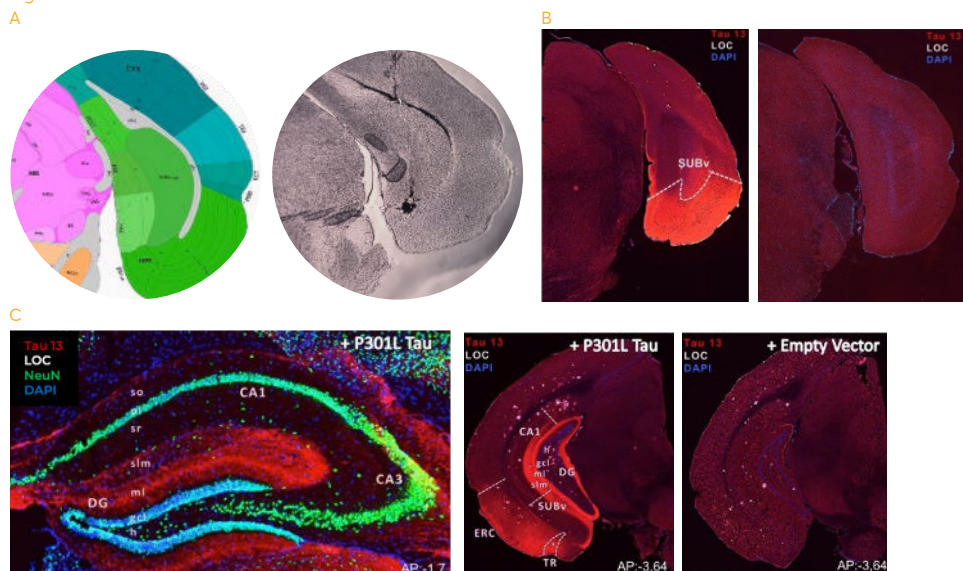


Figure 1: Recombinant adeno-associated virus serotype 9 (AAV9) with human P301L tau gene or empty vector was intracerebrally injected into the ERC of 3 months old male APP_{SL} mice. Surgery coordinates: AP: -1.8; ML: +1.4; DV: -1.4. **A:** Verification of injection site by ink injection into the entorhinal cortex. **B:** Tau expression in the ERC after P301L tau virus injection. **C:** Spreading of tau into the hippocampus after P301L tau injection into the ERC of APP_{SL} mice. All analyses were performed 1 month after virus injection.

Figure 2

ntg + empty vector

ntg + P301L Tau

APP_{SL} + P301L Tau

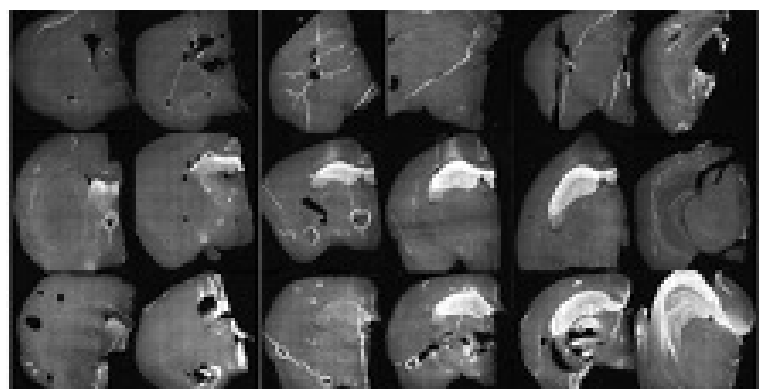


Figure 2: Rapid spread of virally induced pathological tau 4 months after injection.

From left to right: Series of coronally cut brain sections to visualize tau spreading throughout the hippocampus.

